

Spring Bouquet

By
Bev Remillard



For

Hoffman California Fabrics

Fabric Requirements

Bouquet of Beauties & Multi Floral Border (see back)	1/3 yard each
Light Green	1 yard
Dark Green	1 yard
Backing (1 choice)	4 yards

Helpful Supplies

'Easy Angle' 6 1/2" triangle ruler'	Side Triangle' Large Ruler	Invisible Thread
4 1/2" and 8 1/2" rulers for squaring,	Fusible transfer for Appliqué	Water soluble stabilizer

Cutting Instructions

Each (9) Bouquet choice

Block 1, Top Triangles

Cut (1) 6 1/2" triangle of each, plus, from 3 of 9 choices, cut 3 more 6 1/2" triangles – for a total of (12) 6 1/2" triangles.
(use 'Easy Angle' 6 1/2" ruler for best cuts)

Block 1, border 1

Cut (1) 3" strip of each choice, sub-cut into 3" squares.

Block 1, sashing,

Cut (3) 1 1/2" strip of each choice, sub-cut (2) strips as follows:
(4) 6 1/2" x 1 1/2" and (4) 8 1/2" x 1 1/2", additional cuts later.

Multi Floral

Border 2

Cut (5) 2 3/4" strips

Light Green

Appliqué Block 2

(6) 8 1/2" squares – press to locate center and mark

Border 1

(7) 2 3/4" strips, sub-cut to 2 3/4" squares, cut each square 1 x diagonal – to equal (2) triangles.

Border 1

(1) 3 1/2" strip, additional cuts later.

Dark Green

Block 1, Border 1

(4) 3" strips, sub-cut to 3" squares, additional cuts later.

Block 1, Binding

(7) 2 3/4" strips, sub-cut (2) 2 3/4" strip to squares, prepare binding as you like.

Side Triangles

(1) 13" strip, sub-cut to (3) 13" squares, cut each square 2 x diagonal – to equal (4) 6 1/2" x 13" triangles per 13" square, need 10 total, 2 left over.

Corners

(2) 9" squares, cut each square 1 x diagonal to equal (2) 6 1/2" x 9" triangles per 9" square need 4 total.

(Optional) – you can cut triangles with 'Side Triangle' ruler)

Assembly Instructions **Block 1**

- **Small Geese for bottom of block 1** – need 36 total

Combine 3" bouquet squares with 3" Dark Green squares in a Half Square Triangle (HST) – (draw 1 diagonal line on wrong side of Dark Green, then stitch a 1/4" seam allowance on the right and the left side of that diagonal line). Cut on diagonal line to yield (2) combined squares, press to Dark Green, size to 2 1/2" square. **Reserve 30 additional combined squares for Border 1.**

- **Triangles for bottom of block 1** – need 36 total.

Using (18) 2 3/4" squares of Dark Green, cut 1 x diagonal to equal (2) triangles – need (3) triangles for each **block 1**.

- **Assemble Bottom of Block 1** – need 12 total

Combine **Small Geese units** (3) per **block 1** and (3) Dark Green triangles for the **bottom of Block 1** as pictured, Size to a 6 1/2" triangle.

- **Assemble Block 1** – need 12 total

Very carefully combine 6 1/2" **Bouquet Top Triangle** to **Small Geese bottom triangle unit**, to form a square. Size the square to 6 1/2". Add 6 1/2" **bouquet sashing** to top and bottom of **block 1**, press to **sashing**. Then add 8 1/2" **sashing** to left and right, press to **sashing**. Size to 8 1/2" square.



Block 2

Appliqué Flowers

- Using Appliqué samples, trace, and prepare block 2. Make sure appliqué is centered on the block and the block is on point. I used fusible appliqué and attached with machine stitching using water soluble stabilizer, however you can add seam allowance and do needle turn appliqué.



Quilt Body

- Layout block 1 and block 2 as pictured, include Side Triangles and corners. Stitch quilt body in diagonal rows, 2 blocks at a time, then 2 rows at a time. Press and square body as necessary.

Border 1

- Part 1 – Little Geese units
Combine **reserved squares (30)** from **block 1** with small triangles of Light Green in a square in a square unit. Attach (1) small triangle to top and bottom of reserved square, press to square. Then, attach right and left side to reserved square in same manner, stitching over the first stitching. Carefully size each Little Geese unit to 3 1/2" square.
- Part 2 – Assembly
Attach Little Geese units together end to end creating a 3 1/2" wide strip. On the right and left sides you will need **(9)** Little Geese. For the top and bottom of quilt body, you will need **(6)** Little Geese for each.

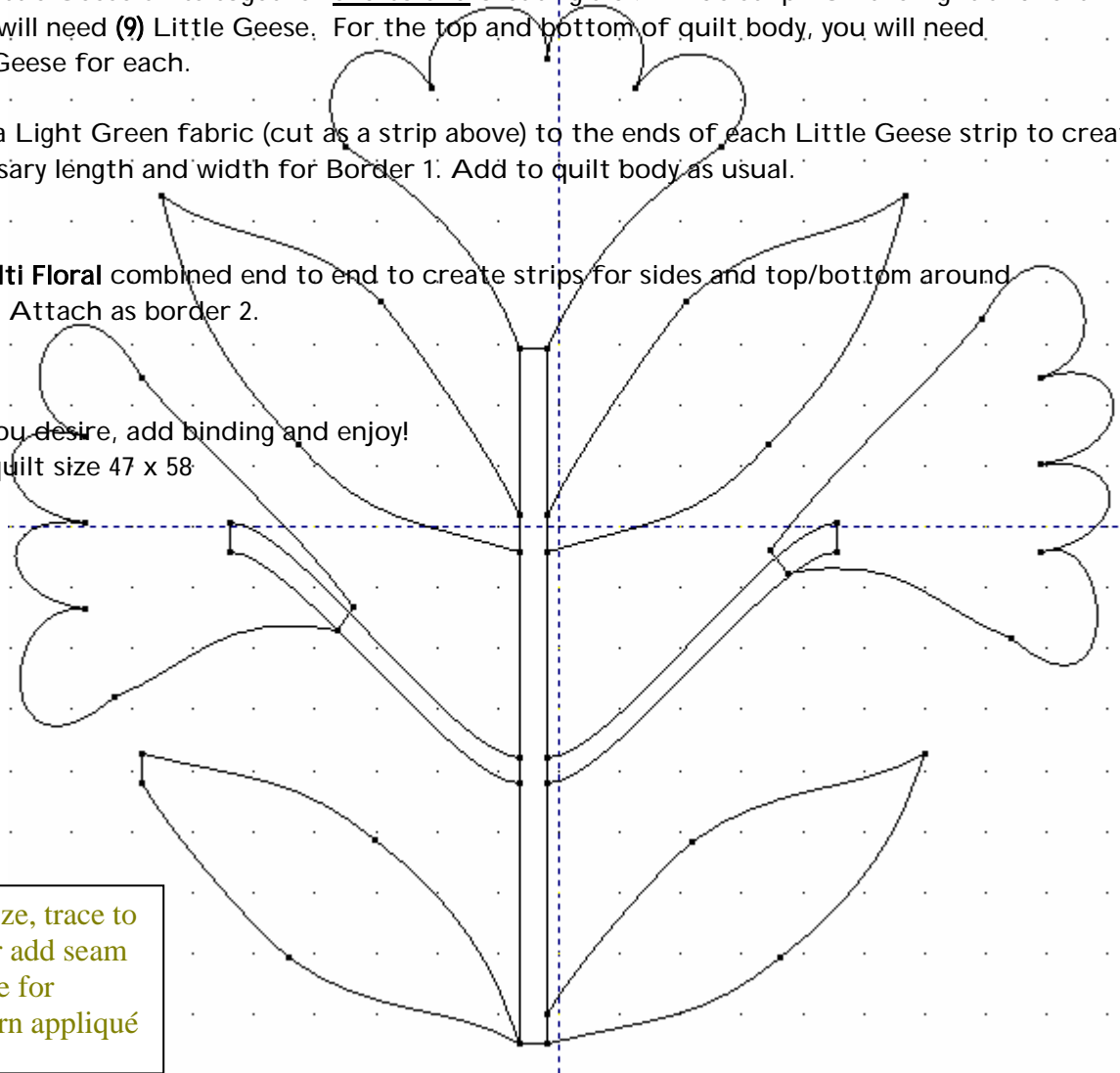
Add extra Light Green fabric (cut as a strip above) to the ends of each Little Geese strip to create the necessary length and width for Border 1. Add to quilt body as usual.

Border 2

- Using **Multi Floral** combined end to end to create strips for sides and top/bottom around the quilt. Attach as border 2.

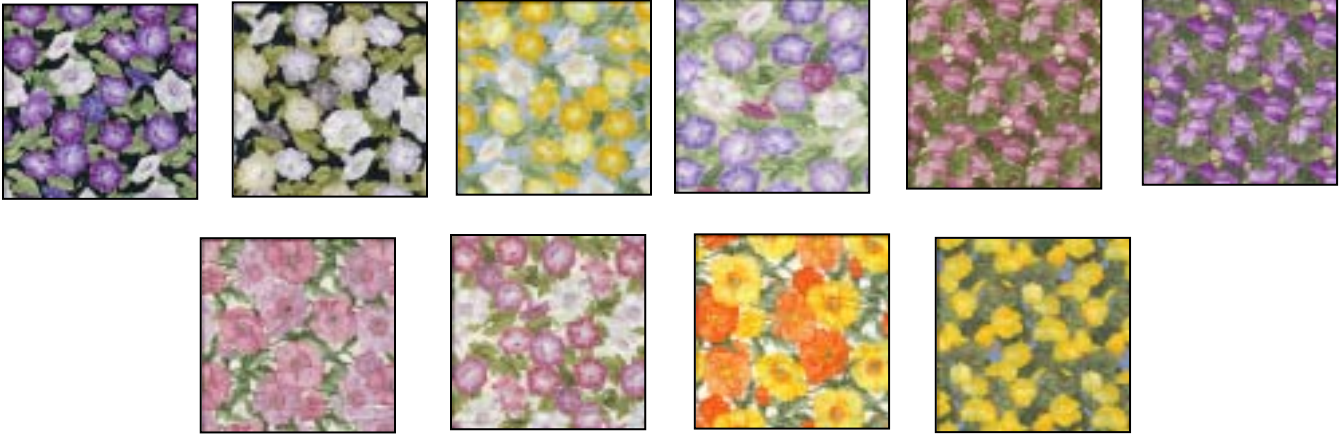
Finishing

- Quilt as you desire, add binding and enjoy!
- Finished quilt size 47 x 58



Actual Size, trace to fusible or add seam allowance for needle turn appliqué

Bouquet of Beauties
By
Hoffman California Fabrics



1/3 yard of each

Multi Floral



1/3 yard

Additional Fabrics



1 yard



1 yard