

Updated

# Java Jive

FEATURING FABRICS FROM THE SPILL THE BEANS AND  
SPILL THE BEANS SWIRLS COLLECTIONS BY BARB TOURILLOTTE



Finished Size: 45" x 58"

Design by Cyndi Walker for Clothworks

## Materials

Yardages based on 42" wide fabric

### Spill the Beans

- 2/3 Yard - Coffee Cup Blocks (19050-1)
- 1 1/4 Yards - Coffee Stripe (19051-1)
- 1 Yard - Aqua Coffee Cups (19052-2)
- 1/2 Yard Binding - Black Triangles (19054-1)
- 3 1/2 Yards Backing - Your Choice
- Suggested - Purple Beans (19053-5)

### Spill the Beans Swirls

- 1 Yard - Black Swirls (19055-1)
- 3/8 yard - Aqua Swirl (19055-2)
- 3/8 yard - Yellow swirl (19055-3)
- 3/8 yard - Green swirl (19055-4)
- 3/8 yard - Purple Swirl (19055-5)
- 3/8 yard - Pink Swirl (19055-8)
- 3/8 yard - Orange swirl (19055-9)

## Cut the Fabrics

WOF = Width of Fabric

LOF = Length of Fabric

### From the Coffee Cup Blocks fussy cut:

- 12 - Coffee Cups, leaving 1/4" of black outside the colored line

### From the Coffee Strips fussy cut:

- 4 - 3 1/2" x LOF strips cut into:
  - 2 - 3 1/2" x 42 1/2" coffee cup strips
  - 2 - 3 1/2" x 35 1/2" coffee cups strips

### Aqua Coffee Cups

- 6 - 4 1/2" x WOF strips pieced into:
  - 2 - 4 1/2" x 45 1/2" strips
  - 2 - 4 1/2" x 50 1/2" strips

### Black Swirls

- 2 - 2 1/2" x 38 1/2" strips
- 2 - 2 1/2" x 29 1/2" strips
- 3 - 2 1/2" x 25 1/2" strips
- 8 - 2 1/2" x 8 1/2" strips
- 3 - 1 1/2" x WOF strips pieced into
  - 2 - 1 1/2" x 48 1/2" strips
  - 2 - 1 1/2" x 37 1/2" strips

### Aqua Swirls

- 4 - 3 1/2" x 8 1/2" strips
- 4 - 3 1/2" x 11 1/2" strips

### Yellow Swirls

- 4 - 3 1/2" x 8 1/2" strips
- 4 - 3 1/2" x 11 1/2" strips

### Green Swirls

- 4 - 3 1/2" x 8 1/2" strips
- 4 - 3 1/2" x 11 1/2" strips

### Purple Swirls

- 4 - 3 1/2" x 8 1/2" strips
- 4 - 3 1/2" x 11 1/2" strips

### Pink Swirls

- 4 - 3 1/2" x 8 1/2" strips
- 4 - 3 1/2" x 11 1/2" strips

### Orange Swirls

- 4 - 3 1/2" x 8 1/2" strips
- 4 - 3 1/2" x 11 1/2" strips

Prior to starting this project, please check our web site for any updates to this pattern: [www.clothworkstextiles.com](http://www.clothworkstextiles.com)

## Directions

### Make the Coffee Cup Blocks

1. Sew a 3 1/2" x 8 1/2" Aqua Swirls strip to the left and right edges of a Coffee Cup Block. Trim the excess Aqua Swirl fabric extending past the top and bottom edges of the Coffee Cup Block. Press the seams towards the Aqua Swirls.
2. Sew a 3 1/2" x 11 1/2" Aqua Swirls strip to the top and bottom edges of a Coffee Cup Block. Trim the excess Aqua Swirl fabric extending past the left and right edges of the Coffee Cup Block. Press the seams towards the Aqua Swirls.

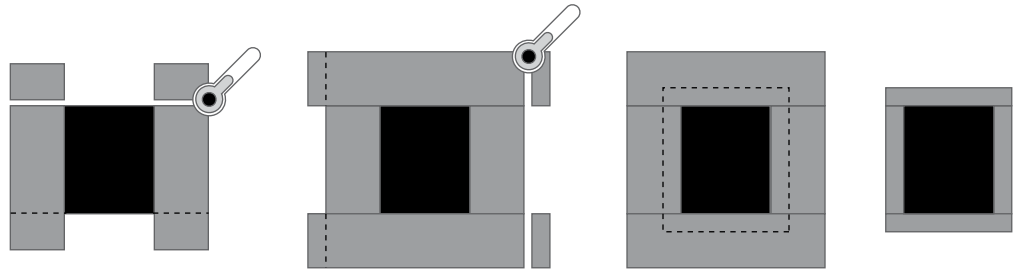


Fig. 1

Fig. 2

Fig. 3

Fig. 4

3. Trim the block down to measure 7 1/2" x 8 1/2", centering the coffee cup image in the middle of the block leaving equal amounts of Aqua Swirls on the top and bottom and equal amounts on the left and right.
4. Repeat these steps to make a total of 12 blocks in the following colors: Two orange blocks, two yellow blocks, two green blocks, two pink blocks, two aqua blocks and two purple blocks.

### Assemble the Quilt Center

1. Referring to the quilt photo for color placement, sew together three Coffee Cup blocks together alternating a 2 1/2" x 8 1/2" Black Swirl strip between each block. Repeat this step to make a total of four rows. Press the seams toward the coffee blocks for each row.
2. Join the four rows together, adding a 2 1/2" x 25 1/2" strip between each row to complete the quilt center. Press the seams in one direction.
3. Sew a 2 1/2" x 38 1/2" Black Swirls strip to each long edge of the quilt center; press the seams towards the border. Sew a 2 1/2" x 29 1/2" Black Swirls strip to the top and bottom edges of the quilt center; press the seams towards the border.
4. Sew a 3 1/2" x 42 1/2" Coffee Cup Stripe strip to each long edge of the quilt center; press the seams towards the border. Sew a 3 1/2" x 35 1/2" Coffee Cup Stripe strip to the top and bottom edges of the quilt center; press the seams towards the border.
5. Sew a 1 1/2" x 48 1/2" Black Swirls strip to each long edge of the quilt top; press the seams towards the border. Sew a 1 1/2" x 37 1/2" Black Swirls strip to the top and bottom edges of the quilt top; press the seams towards the border.
6. Sew a 4 1/2" x 50 1/2" Aqua Coffee Cups strip to each long edge of the quilt top; press the seams towards the border. 4 1/2" x 45 1/2" Aqua Coffee Cups strip to the top and bottom edges of the quilt top; press the seams towards the border.

While every attempt has been made to give accurate measurements, yardage requirements, and construction directions, this does not allow for personal variations in measuring, cutting and/or sewing. Clothworks is not responsible for printing errors.