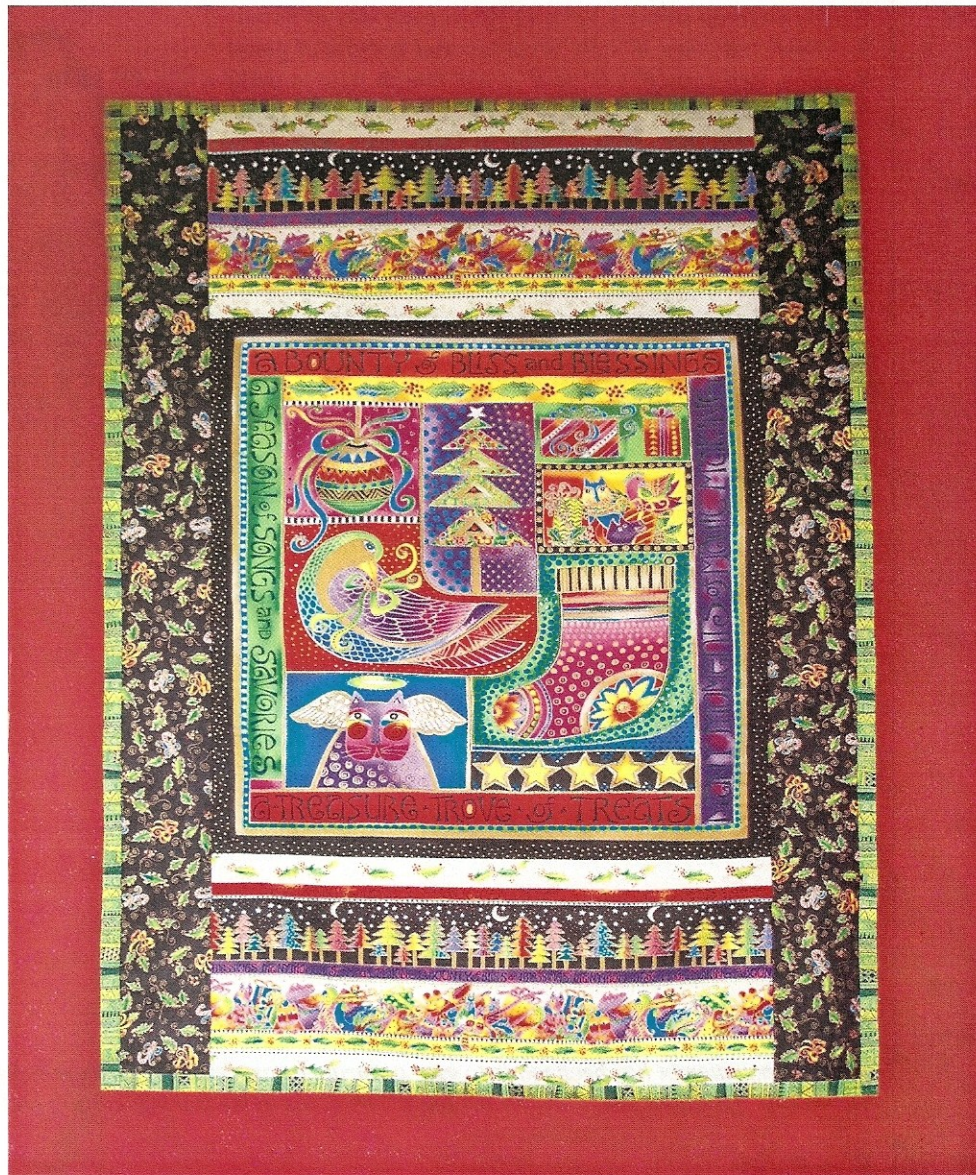


CHRISTMAS BLESSINGS WALL HANGING

Featured Fabrics From Laurel Burch Bountiful Blessing Collection



Finished Size: 37"x50"

Designed by Gary Darwin

www.PMQuilting.com

Fabrics distributed by Clothworks

CHRISTMAS BLESSINGS WALL HANGING

Materials

Yardage based on 42" wide fabric

1 Panel (90350-1m)
1/8 yard (90330-1m) Black gold dots
1/3 yard (90351-1m) Stripe fabric
1/4 yard (90356-1m) Black with candy canes and ivy
1/8 yard (90333-7m) Green LB basics
1 1/8 yard (903309-1m) Red with stars
Also for binding

Cut The Fabric

WOF= WIDTH OF FABRIC

Cut black gold dots

- 2- 1"x20" WOF
- 2- 1"x23" WOF

Cut stripe fabric from top of cream ivy to Bottom of the cream ivy WOF

- 9 1/2" wide x 44" long
- Cut 9 1/2" strip into 2 half 21 1/2" long

Cut green stripe

- 1 1/4" WOF
- Cut 2 - 1 1/4" x 30"
- Cut 2 - 1 1/4" x 42 1/2"

Cut red with stars

- Cut 5 - 4" x 44" WOF
- Cut 2 - of the 4" strips to 4"x30 1/2"
- Cut 2- of the 4" strips to 4"x 43" (cut off finished edge)
- Cut 1- 4" strips to 4"x6 1/2"

Assemble the wall hanging

1. Trim panel to 20" wide x 21 1/2" Tall
2. Sew black dots 1" x20" strip to top and bottom of panel
3. Sew black dots 1" x23" strip to each side of panel
4. Sew the stripe fabric (cream ivy to cream ivy) 9 1/2" wide x 21 1/2" to top and bottom of panel
5. Sew Green stripe 1 1/4" x 30" to top and bottom of panel
6. Sew Green stripe 1 1/4" x 42 1/2" to each side of panel
7. Sew Red stars 4"x 30 1/2" to top and bottom of panel
8. Sew Red stars 4"x 6" to 4" x 43" length wise to make a 4"x 49" strip
9. Sew red stars 4"x 49" strip to each side

Quilt as desired Use the rest of the Red with Stars to Bind Wall hanging

While every attempt has been made to give accurate measurements, yardage requirements, and construction Directions. This does not allow for personal variations in measuring, cutting and or sewing.

Gary Darwin
www.pmquilting.com